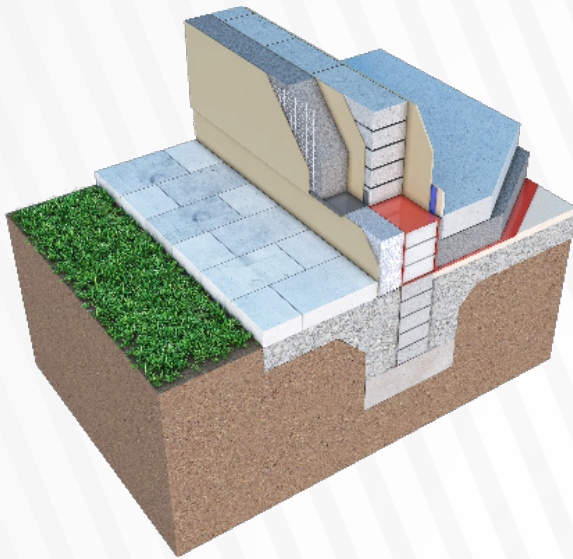


KORE

Expanded Polystyrene External Wall Insulation



KORE External is a high performance expanded polystyrene (EPS) insulation board that is used in conjunction with a composite external thermal insulation system. The product consists of rigid boards cut from moulded blocks of EPS. The blocks are aged for four to six weeks to ensure the product is delivered to site to the exacting tolerances required for external insulation products. KORE External products are available in two grades of material, silver and white, and a range of thicknesses.

Benefits of KORE External Insulation

- Meets and exceeds buildings regulations
- Suitable for passive house construction
- Installed by insulation experts
- Suitable for use with composite external insulation systems
- Thermal mass benefits from concrete construction

Characteristic	Level/Class/Limit Value	Value (mm)	Standard
Thickness	T1	±1mm	EN823
Length	L2	±2mm	EN822
Width	W2	±2mm	EN822
Squareness	S2	±2mm	EN824
Flatness	P5	±5mm	EN825

Product Description

KORE External Insulation, together with a composite system, is fixed to the external face of external wall constructions. The product is designed for application on cavity walls, solid walls, hollow block walls, and timber frame walls. The product is suitable for use on existing buildings.

KORE External Insulation should be used in conjunction with an approved NSAI Render System.

Design Guides

KORE Insulation provides a number of design guides for each of our products, including KORE External, for KORE External there is a design guide available for New Build and a separate one available for Retrofitting.

*Design Guides are available on request, or additionally on our website and resource centre.

ISO Standards

KORE External is manufactured under the following standards:

- 1) ISO 14001:2015 - Environmental Management systems
- 2) ISO 9001:2015 - Quality Management Systems
- 3) ISO 45001:2018 – Occupational Health & Safety Management System

EN Standards

KORE External Wall Insulation is a high performance External insulation consisting of rigid polystyrene (EPS) boards cut from moulded blocks of EPS that are manufactured in accordance with IS EN 13163:2012+A2:2016 Thermal insulation products for buildings - Factory made expanded polystyrene (EPS) products - Specification.

	KORE External EPS 70 White	KORE External EPS70 Silver	KORE External Plinth EPS200 White
Thickness Insulation (mm)	Thermal Resistance (m ² .K/W)		
100mm	2.703	3.226	3.030
120mm	3.243	3.871	3.636
150mm	4.054	4.839	4.545
175mm	4.730	5.645	5.303
200mm	5.405	6.452	6.061
250mm	6.757	8.065	7.576
300mm	8.108	9.677	9.091

Dimensions

Standard Size: 1200mm x 600mm

Standard Thickness:

EPS70 White and Silver - 100mm, 120mm, 150mm, 175mm, 200mm, 250mm, 300mm

EPS200 White - 10mm, 20mm, 30mm, 40mm, 50mm, 60mm, 70mm, 80mm, 90mm, 100mm

Compressive Strength

KORE External EPS70: In accordance with IS EN 13163:2012 and EN826, compressive strength at 10% deformation, CS(10)70.

EPD

KORE Insulation has produced an Environmental Product Declaration for all grades of our Expanded Polystyrene material. This shows that KORE is being open and transparent in regards to the Environmental Impact our product has through its production.

**A copy of this is available on our website.*

Technical Support

KORE Insulation provides a comprehensive technical support service that includes:

- U-value calculations
- Condensation risk analysis
- Determination of exposure zone
- Accredited drawings and details
- Thermal bridging analysis results
- Temperature factor analysis
- BIM Files

Thermal Performance

The thermal conductivity of KORE External insulation products are in accordance with IS EN 13163:2012 and EN 12667 Thermal Performance of building materials and products - determination of thermal resistance by means of guarded hot plate and heat flow meter method.

KORE External EPS70 White: 0.037 W/mK

KORE External EPS70 Silver: 0.031 W/mK

KORE External EPS200 White: 0.033 W/mK

KORE Contact Details

P: +353 49 4336998 **F:** +353 49 4336823

E: info@koresystem.com **W:** www.kore-system.com

Address:

The Green
Kilnaleck
Co. Cavan
A82 T291

Facebook: www.facebook.com/KOREIreland

Twitter: www.twitter.com/KORESsystem